

Research Article

Specific Proteins in Nontuberculous Mycobacteria: New Potential Tools

Patricia Orduña,¹ Antonia I. Castillo-Rodal,¹ Martha E. Mercado,¹
Samuel Ponce de León,² and Yolanda López-Vidal²

¹Programa de Inmunología Molecular Microbiana, Departamento de Microbiología y Parasitología,
Facultad de Medicina, Universidad Nacional Autónoma de México, 04510 Mexico City, DF, Mexico

²División de Investigación Clínica, Facultad de Medicina, Universidad Nacional Autónoma de México, 04510 Mexico City, DF, Mexico

Correspondence should be addressed to Yolanda López-Vidal; lvidal@unam.mx

Received 25 October 2014; Revised 20 December 2014; Accepted 21 December 2014

Academic Editor: Mehdi Mirsaedi

Copyright © 2015 Patricia Orduña et al. This is an open access article distributed under the Creative Commons Attribution License, which permits unrestricted use, distribution, and reproduction in any medium, provided the original work is properly cited.

Nontuberculous mycobacteria (NTM) have been isolated from water, soil, air, food, protozoa, plants, animals, and humans. Although most NTM are saprophytes, approximately one-third of NTM have been associated with human diseases. In this study, we did a comparative proteomic analysis among five NTM strains isolated from several sources. There were different numbers of protein spots from *M. gordonae* (1,264), *M. nonchromogenicum* type I (894), *M. nonchromogenicum* type II (935), *M. peregrinum* (806), and *M. scrofulaceum/Mycobacterium mantanii* (1,486) strains, respectively. We identified 141 proteins common to all strains and specific proteins to each NTM strain. A total of 23 proteins were selected for its identification. Two of the common proteins identified (short-chain dehydrogenase/reductase SDR and diguanylate cyclase) did not align with *M. tuberculosis* complex protein sequences, which suggest that these proteins are found only in the NTM strains. Some of the proteins identified as common to all strains can be used as markers of NTM exposure and for the development of new diagnostic tools. Additionally, the specific proteins to NTM strains identified may represent potential candidates for the diagnosis of diseases caused by these mycobacteria.

1. Introduction

Mycobacteria that are not members of the *Mycobacterium tuberculosis* complex (*Mycobacterium africanum*, *Mycobacterium bovis*, *Mycobacterium bovis* BCG, *Mycobacterium canettii*, *Mycobacterium microti*, and *Mycobacterium tuberculosis*) or leprosy are classified as nontuberculous mycobacteria (NTM). The NTM group comprises more than 150 species that are widely distributed in many different environments (<http://www.bacterio.cict.fr/m/mycobacterium.html>). NTM have been isolated from water, soil, air, food, protozoa, plants, animals, and humans [1, 2]. Although most NTM are saprophytes, approximately one-third of NTM have been associated with human diseases [3, 4].

NTM infection is relatively uncommon and they are more frequently observed in immunocompromised individuals [5]. However, the rate of disease caused by NTM in individuals without abnormalities that would predispose them to infection appears to be increasing [6]. The development of

new epidemiological tools, which are based on molecular techniques, has allowed an increased diagnosis of NTM disease and an increase in the identification of NTM species that are responsible for disease [4, 7].

Person to person transmission of NTM has not been reported, and it is generally accepted that NTM infections are acquired from environmental sources (water, soil) and that they are responsible for many nosocomial infections and occupational diseases. Some authors have indicated that NTM infections were directly related to exposure to contaminated water as they demonstrated to isolate the same clones from the water and patients [1, 8, 9]. Nevertheless, there is also a correlation between NTM-contaminated metallic fluids and aerosols with hypersensitive pneumonitis, asthma, and bronchitis observed in metallurgical workers [10]. The NTM species associated with human diseases have been isolated from the lungs, skin, and other soft tissues. Pulmonary infection is the most common disease manifestation and is associated with an increased age of the patient, while the skin

and soft tissue diseases have not been associated with age or gender [4, 7].

Previous exposure to NTM has been proposed as one of the main causes of reduced efficacy of BCG vaccination against pulmonary tuberculosis infection [11, 12]. Black et al. demonstrated that young adults living in the northern part of Malawi are immunologically reactive to NTM antigens prior to vaccination with BCG [13]. In addition, numerous animal model studies have provided evidence that exposure to NTM before the BCG vaccine application may modulate the immune response that is induced by the BCG vaccine [14, 15]. Mendoza-Coronel et al. demonstrated that *Mycobacterium avium* may be implicated in the induction of immune tolerance mechanisms, which could impact the T cell response that is induced by BCG vaccination [16].

Additionally, exposure to NTM is responsible for the low predictive value of the purified protein derivative (PPD) test. The PPD or the Mantoux reaction is the only available diagnostic tool to identify latent tuberculosis. Ideally, the PPD test could be used as a marker for tuberculosis infection, but unfortunately there is cross-reactivity between NTM infection and BCG vaccination [17–19]. Black et al. described that the IFN-gamma response to *M. tuberculosis* purified protein derivative (PPD) after vaccination was lower in individuals who reacted strongly to NTM antigens [13].

The increase of NTM infections, the variability of BCG vaccine protection, and the lack of a diagnostic tool for *Mycobacterium* species infection make it necessary to identify novel proteins that can potentially be used in the development of new vaccines and diagnostic tools against tuberculosis infection [20].

In this study, we did a comparative proteomic analysis of five different NTM strains: three were isolated from the pump water in Mexico City (*Mycobacterium gordonae*, *Mycobacterium nonchromogenicum* type II, and *Mycobacterium peregrinum*), one was isolated from human pulmonary infection (*Mycobacterium scrofulaceum/Mycobacterium mantenii*), and one was purchased (*M. nonchromogenicum* type I, ATCC 1953). We identified proteins common to all strains and specific proteins to each NTM strain. Some of the proteins that were common between the strains could be used as markers of NTM exposure.

2. Materials and Methods

2.1. Bacterial Strains. Five strains of NTM were used in this study: three were isolated from the pump water in Mexico City as previously described by Castillo-Rodal et al. (*M. gordonae*, *M. nonchromogenicum* type II, and *M. peregrinum*) [2], one was isolated from human pulmonary infection (*M. scrofulaceum/M. mantenii*), and one was purchased (*M. nonchromogenicum* type II, ATCC 1953) (Table 1). To ensure that all NTM strains were in the metabolically activated state, growth curves of each strain in Sauton medium were determined (Figure 1). All strains were grown to the mid-logarithmic phase (10 days for *M. nonchromogenicum* type I, 20 days for *M. nonchromogenicum* type II, 11 days for *M. gordonae*, 8 days for *M. peregrinum*, and 17 days for *M. scrofulaceum/M. mantenii*) at 37°C with shaking and then

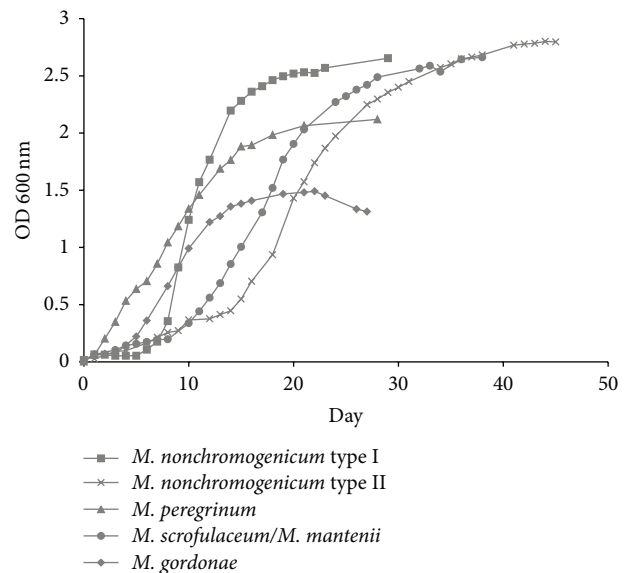


FIGURE 1: Representative growth curves of NTM strains included in this study. Growth curves were realised on Sauton medium at 37°C by duplicate.

were harvested by centrifugation, washed three times, and suspended in sterile deionised water.

2.2. Sample Preparation and 2D-PAGE. Cellular proteins were obtained by sonicating the bacteria (Ultrasonic Processor, Cole Parmer Corporation, USA) in the presence of protease inhibitors (10 mM PMSE, 1 mM EDTA; cycles: 1 min ON/1 min OFF) at 4°C. For 2D-PAGE, approximately 80 µg of protein for the analytical gels or 100–150 µg of protein for the preparative gels was solubilised, denatured, and reduced in sample buffer (4% CHAPS, 9 M urea, 70 mM l-dithiothreitol (DTT), 0.001% bromophenol blue, and 0.1% 3–10 ampholyte) and was used to rehydrate 11-cm, pH 4–7 IPG strips (ReadyStrip™, IPG strips, Bio-Rad, USA). IEF was carried out on a Multiphor II (Amersham Biosciences, UK) until 52,000 VH at 17°C. Prior to separation in the second dimension, IPG strips were equilibrated in a solution containing 6 M urea, 30% (v/v) glycerol, 50 mM Tris-base pH 8.8, and 2% (w/v) SDS. The strips were equilibrated first for 15 min with 70 mM DTT and then for 15 min with 120 mM iodoacetamide. The second-dimension electrophoresis was performed using a 12.5% polyacrylamide gel (Hoefer SE-600, Amersham Biosciences, UK) with a voltage gradient of 50–150 V for approximately four hours. Once fixed, the proteins were silver-stained and the gel images were then captured in a digital format for analysis (Molecular Imager GS-800™ Calibrated Densitometer, Bio-Rad, USA).

2.3. Gel Analysis and Spot Selection. 2D-PAGE was performed twice for each strain, and independent cultures were utilised to eliminate technical variation. Gel analysis was performed using PDQuest-Advanced 2D Analysis V8.0 (Bio-Rad, USA). A master image gel (MIG) was integrated with the two duplicate gels of each strain and was utilised for comparison. To estimate and overcome technical variations

TABLE 1: Description of the NTM strains used in this study.

Strain	Source	Growth
<i>M. gordonae</i>	Superficial water	Slow
<i>M. nonchromogenicum</i> type I (ATCC 19530)	Soil	Slow
<i>M. nonchromogenicum</i> type II	Superficial water	Slow
<i>M. peregrinum</i>	Water distribution system Mexico City	Fast
<i>M. scrofulaceum/M. mantanii</i>	Human pulmonary infection	Slow

TABLE 2: Spots identified in the 2D-PAGE gels of cellular proteins from various NTM strains.

Strain	Total spots in master image gel	CV (%)*
<i>M. gordonae</i>	1,264	0.2
<i>M. nonchromogenicum</i> type I	894	5.5
<i>M. nonchromogenicum</i> type II	935	0.07
<i>M. peregrinum</i>	806	0.02
<i>M. scrofulaceum/M. mantanii</i>	1,486	0.01

* Coefficient of variation: data were normalised according to the total density of the gel image.

between replicates, the spots were quantified for all of the gels. The variation in the coefficients was calculated using a previously described method [21, 22]. The spot intensity values were normalised to the total pixel count for each gel. Ten common spots for all strains, 7 specific spots for *M. gordonae* strain, and 2 specific spots for *M. arupense*, *M. nonchromogenicum*, and *M. peregrinum* strains were selected and identified by mass spectrometry. Spot selection criteria included the following: the spot was well defined, the spot had a high intensity, and the spot locations were diversely spaced throughout the gel.

2.4. Protein Identification. The selected spots were identified by a previously described protocol [21, 22]. Protein identification was performed using a 3200 QTRAP hybrid tandem mass spectrometer (3200 QTRAP, Applied Biosystems, USA) equipped with a nanoelectrospray ion source (NanoSpray II) and a MicroIonSpray II head. Proteins were identified based on their MS/MS spectra datasets using the MASCOT search algorithm (Version 1.6b9, Matrix Science, London, UK). A BLAST search was conducted comparing the sequences to the *M. tuberculosis* complex and Eubacteria kingdom sequences of the National Center for Biotechnology Information (NCBI) nonredundant database (NCBI nr20070623).

3. Results and Discussion

All of the NTM strains that were used in this study were slow growth strains, except for *M. peregrinum* that was a fast growth strain. We determined that the proteins did not have evidence of degradation by a polyacrylamide gel electrophoresis (data not shown).

The cell fractions from the five NTM strains in the mid-logarithmic phase were isolated and then analysed by two-dimensional polyacrylamide gel electrophoresis (2D-PAGE). We identify different number of protein spots from *M. gordonae* (1,264), *M. nonchromogenicum* type I (894), *M. nonchromogenicum* type II (935), *M. peregrinum* (806), and *M. scrofulaceum/M. mantanii* (1,486) strains, respectively

(Figure 2, Table 2). The distribution of the proteins by MM and pI was similar between the five NTM strains analysed (Figure 3).

Comparison of the protein profiles showed that 141 proteins were present in all NTM strains studied and approximately 80% of the proteins were shared between two or more strains (named common proteins). We also identified proteins present in only one NTM strain (named specific proteins). *M. gordonae* was observed to have the highest percentage of specific proteins, with 24% (Table 3).

A total of 23 proteins of the five NTM strains studied were selected for their identification by MS-based technologies. Spot selection criteria included the following: the spot was well defined, the spot had a high intensity, and the spot locations were diversely spaced throughout the gel.

We identify ten common proteins to all NTM strains studied (Table 4). Four of these proteins corresponded to informational pathways (RNA polymerase beta subunit, 50S ribosomal protein L7/L12, diguanylate cyclase, and DNA polymerase III), three were related to intermediary metabolism and respiration (adenylate kinase, probable aldehyde dehydrogenase, and enolase), two were identified as conserved hypothetical proteins (WAG31, Rv3075c), and one was related to lipid metabolism (short-chain dehydrogenase/reductase). The 50S ribosomal protein L7/L12, adenylate kinase, enolase, and two hypothetical proteins (WAG31 and Rv3075c) have been previously identified in the proteome of *M. tuberculosis* and *M. bovis* BCG showing that these proteins are shared with *M. tuberculosis* complex species [23–25]. Interestingly, the ribosomal protein L7/L12 and hypothetical protein WAG31 have been found in the proteome of PPD *M. tuberculosis* and/or PPD *M. bovis* [26]. Furthermore, the 50S ribosomal protein L7/L12 was described as an immunogenic protein in the BCG Mexico strain suggesting that this protein may be part of the cross-reaction observed between BCG vaccination and NTM exposure [27]. The five remaining proteins were identified for the first time in a mycobacterial proteome in this study.

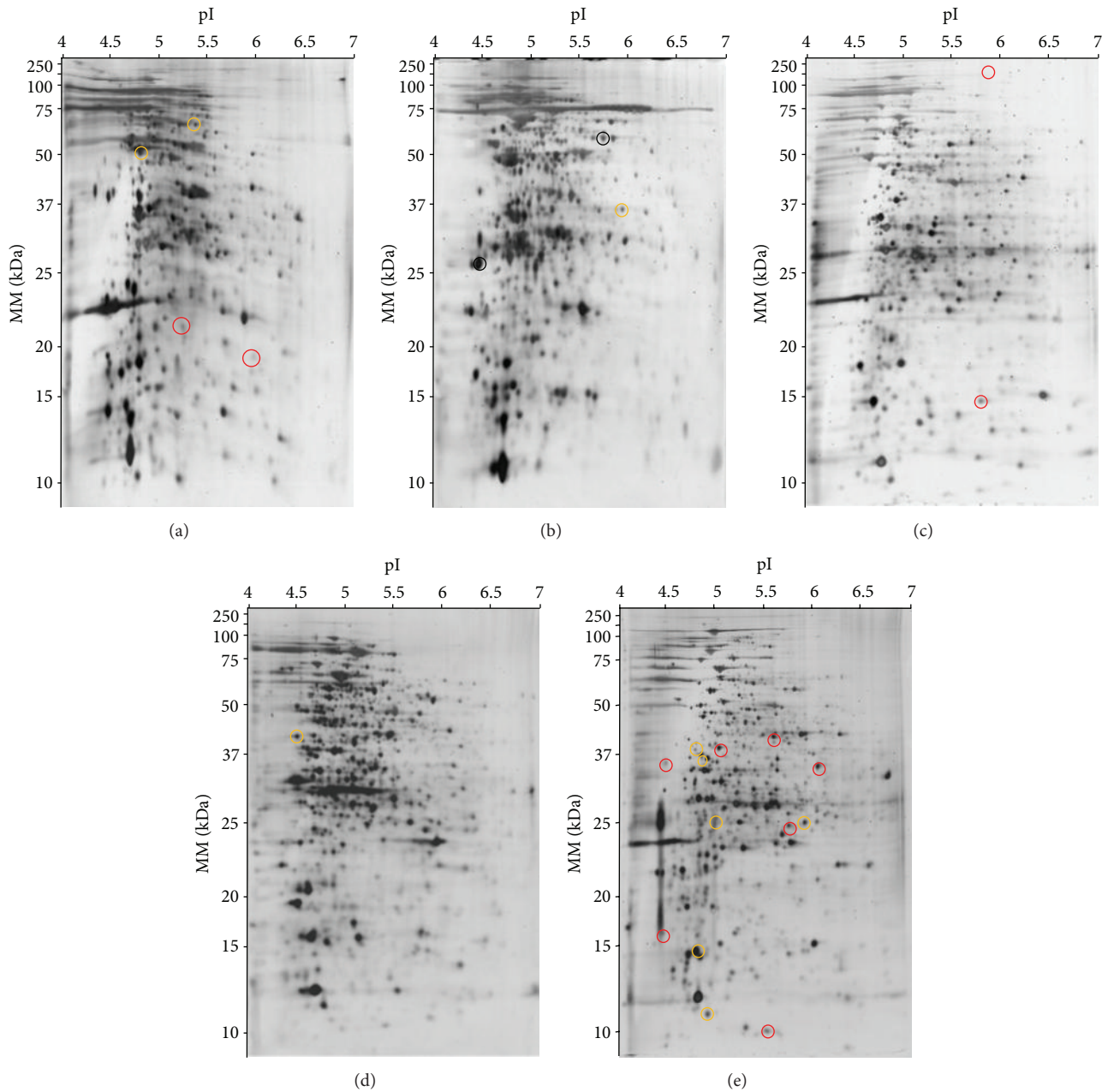


FIGURE 2: Representative 2D-PAGE of NTM cellular proteins of (a) *M. nonchromogenicum* type I, (b) *M. peregrinum*, (c) *M. nonchromogenicum* type II, (d) *M. scrofulaceum*/*M. mantanii*, and (e) *M. goodii*. Eighty micrograms of cell proteins was isoelectrically focused in IPG strips (pH 4–7) and run on sodium dodecyl sulphate (SDS) 12.5% polyacrylamide gel. Gels were silver-stained and analysed with PDQuest 2D Analysis V8.0 (Bio-Rad, USA). The yellow and red circles were used to identify common proteins to all NTM strains and specific proteins to each NTM strain, respectively, by MS-based techniques.

The proteins of NTM that were identified in this study and have been previously described in the *M. bovis* BCG proteome can explain the cross-reactivity observed between BCG vaccination and NTM exposition. For example, the 50S ribosomal protein L7/L12, which we determined to be present in all proteomes of NTM strains studied, has been previously described as an immunogenic protein that upregulated the expression of the mannose receptor, CD80, CD86, and MHC

class II molecules and it is associated with mycobacterial virulence [28, 29].

Moreover, the proteins that have previously been identified in the PPD *M. tuberculosis* proteome and that were identified in the NTM proteome, such as 50S ribosomal protein L7/L12, adenylate kinase, and hypothetical protein WAG31, may be the cause of the low predictive value of the PPD test to diagnose *M. tuberculosis* infection [26]. In fact,

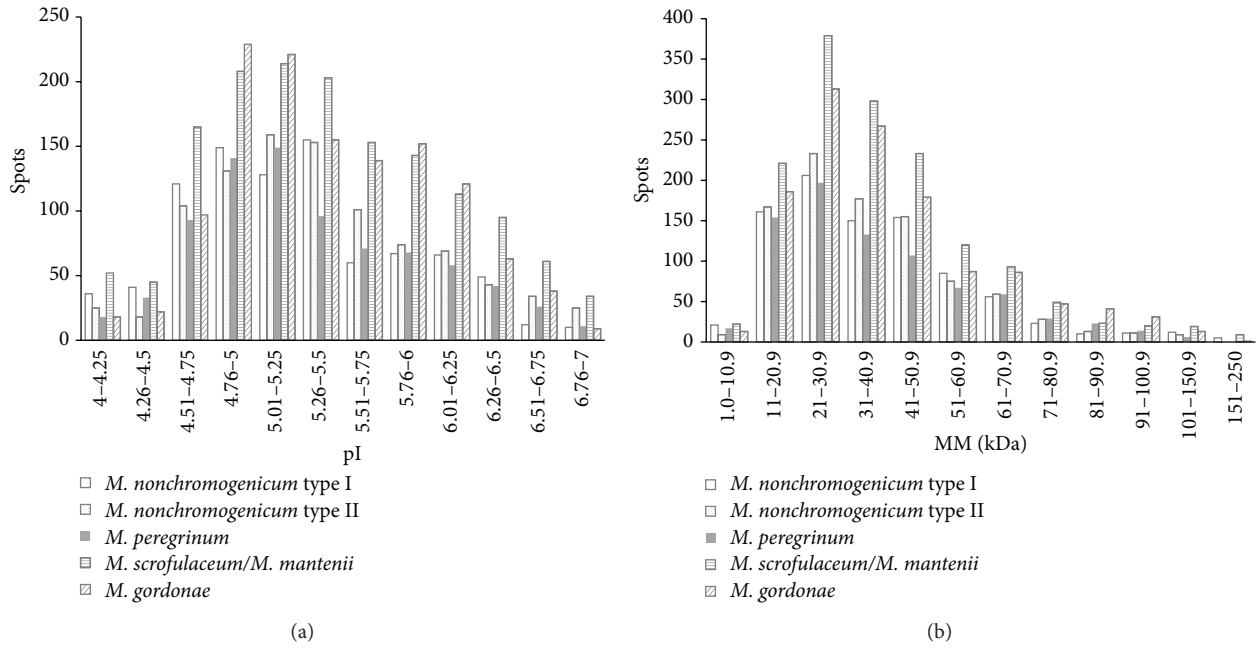


FIGURE 3: Distribution of proteins by isoelectric point (a) and molecular mass (b). Gel analysis was performed using PDQuest-Advanced 2D Analysis V8.0 (Bio-Rad, USA).

TABLE 3: Common and specific proteins in the NTM strains studied.

Strain	Common proteins* (%)	Specific proteins** (%)
<i>M. gordonae</i>	963 (76)	301 (24)
<i>M. nonchromogenicum</i> type I	701 (81)	166 (19)
<i>M. nonchromogenicum</i> type II	723 (81)	171 (19)
<i>M. peregrinum</i>	671 (83)	135 (17)
<i>M. scrofulaceum/M. mantenii</i>	1,231 (83)	255 (17)
Proteins common to all strains	141	

*Common proteins were defined as proteins that were present in at least two NTM strains.

**Specific proteins were defined as proteins present only in one NTM strain.

the 50S ribosomal protein L7/L12 is an immunogenic protein that induces a strong delayed-type hypersensitivity reaction [28], while the hypothetical protein WAG31 is involved in peptidoglycan synthesis and it has an important role in wall synthesis, cell growth, and cell division of mycobacteria [30].

Thirteen specific proteins from the NTM strains were identified by MS-based technologies (Table 4). We identified two specific proteins to *M. arupense* (deoxyuridine 5'-triphosphate nucleotidohydrolase and probable 3-hydroxythioester dehydratase), *M. nonchromogenicum* (conserved hypothetical protein, catalase-peroxidase), and *M. peregrinum* (mannose-binding lectin, inositol-5-monophosphate dehydrogenase) and seven specific proteins to *M. gordonae* (probable cold shock protein A, putative mannose-specific lectin precursor, superoxide dismutase, malate dehydrogenase, F420-dependent glucose-6-phosphate dehydrogenase, luciferase-like protein, and hypothetical protein SKA58_12772). Four proteins identified as specific to *M. gordonae* (probable cold shock protein A, superoxide dismutase, malate dehydrogenase, and F420-dependent glucose-6-phosphate dehydrogenase) have also been identified in the

proteomes of *M. tuberculosis* and/or *M. bovis* BCG [23–25]. Moreover, the F420-dependent glucose-6-phosphate dehydrogenase and superoxide dismutase proteins have been identified in PPD *M. avium* and *M. immunogenium* proteomes, respectively [26, 31]. Interestingly, Dong et al. described that the superoxide dismutase has one immunodominant epitope for cytotoxic T lymphocytes, which are implicated in protective immunity against tuberculosis [32]. These findings suggest that these proteins, which were identified as specific to *M. gordonae*, are shared with other NTM strains and these may be the cause of cross-reactivity against *M. tuberculosis*, *M. bovis* BCG, and/or other NTM.

On the other hand, we identified three specific proteins to *M. gordonae* (putative mannose-specific lectin precursor, luciferase-like protein, and hypothetical protein SKA58_12772) and one specific protein to *M. peregrinum* (mannose-binding lectin) that have not been previously described in any proteomic analysis of mycobacterial strains and did not align with any protein sequences in the *M. tuberculosis* complex database (data not shown). The function of these proteins is not well defined; however, we have known

TABLE 4: Proteins identified by sequencing in NTM strains.

Protein	Name	Function	Gene name	Peptides ID	Global score ^a	Sequence coverage %	Reference sequence	FC ^b
Proteins identified in <i>M. nonchromogenicum</i> type I								
1	Deoxyuridine 5'-triphosphate nucleotidohydrolase	Involvement in the biosynthesis of thymidylate. This enzyme is involved in nucleotide metabolism Catalytic activity: dUTP + H ₂ O = dUMP + pyrophosphate	<i>dut</i>	2	109	11	<i>M. gilvum</i>	7
2	Probable 3-hydroxy-thioester dehydratase	Unknown	<i>hitZ</i>	3	65	23	<i>M. tuberculosis</i> H37Rv	7
Proteins identified in <i>M. nonchromogenicum</i> type II								
1	Conserved hypothetical protein	Unknown Multifunctional enzyme that exhibits a catalase, a broad-spectrum peroxidase, and peroxynitritase activities may play a role in the intracellular survival of mycobacteria within macrophages for the protection against reactive oxygen and nitrogen intermediates produced by phagocytic cells	—	4	33	27	<i>M. tuberculosis</i> complex	10
2	Catalase-peroxidase KATG		<i>katG</i>	4	115	6	<i>M. avium</i> subsp. <i>paratuberculosis</i> K-10	0
Proteins identified in <i>M. peregrinum</i>								
1	Mannose-binding lectin	Unknown	<i>MSMEG3662</i>	4	114	30	<i>M. smegmatis</i>	—
2	Inositol-5-monophosphate dehydrogenase	IMPDH catalyses the NAD-dependent oxidation of inosine 5'-monophosphate (IMP) to xanthosine 5'-monophosphate (XMP)	<i>PRK05567</i>	3	125	6	<i>M. vanbaalenii</i>	7
Proteins identified in <i>M. goodnae</i>								
1	Probable cold shock protein A	Possibly involved in the acclimation to cold temperatures (the production of the protein is thought to be induced at low temperatures)	<i>cspA</i>	1	34	14	<i>M. tuberculosis</i> H3Rv	0
2	Putative mannose-specific lectin precursor	Lysine domain, found in a variety of enzymes involved in bacterial cell wall degradation. This domain may have a general peptidoglycan binding function	<i>MAB2373</i>	2	72	18	<i>M. abscessus</i>	10
3	Superoxide dismutase	Destroys toxic radicals that are normally produced within the cells Catalytic activity: 2 peroxide radicals + 2H(+) = O ₂ + H ₂ O ₂	<i>sodA</i>	2	81	24	<i>M. goodnae</i> and <i>M. asiaticum</i>	0
4	Malate dehydrogenase	Involved in the conversion of malate to oxaloacetate Catalytic activity: (S)-malate + NAD ⁺ = oxaloacetate + NADH	<i>mdh</i>	5	197	14	<i>M. marinum</i>	7
5	Luciferase-like protein	Energy production and conversion	<i>Mmcs 0532</i>	3	151	9	<i>Mycobacterium</i> sp.	—

TABLE 4: Continued.

Protein	Name	Function	Gene name	Peptides ID	Global score ^a	Sequence coverage %	Reference sequence	FC ^b
6	F420-dependent glucose-6-phosphate dehydrogenase	Catalyses oxidation of glucose-6-phosphate to 6-phosphogluconolactone using coenzyme F420 (hydroxy-5-deazaflavin derivative) as the electron acceptor	<i>fgd</i>	3	148	10	<i>M. avium</i> (<i>M. ulcerans</i> , <i>M. marinum</i> , <i>M. chelonae</i>)	7
7	Hypothetical protein SKA58_12772	Predicted phosphohydrolases	SKA58_12772	1	52	3	<i>Sphingomonas</i> sp. SKA58	—
Common proteins to all NTM strains								
1	RNA polymerase beta subunit	Catalyses the transcription of DNA into RNA using the four ribonucleoside triphosphates Catalytic activity: N nucleoside triphosphate = N diphosphate + [1](N)	<i>rpoB</i>	2	30	72	<i>M. tuberculosis</i>	2
2	50S ribosomal protein L7/L12	Involved in translation mechanisms. Thought to be the binding site for several of the factors involved in protein synthesis and appears to be essential for accurate translation	<i>rplL</i>	4	115	35	<i>Mycobacterium</i> sp. (<i>M. smegmatis</i> and <i>M. vanbaalenii</i>)	2
3	Adenylate kinase	This enzyme is essential in intracellular nucleotide metabolism; in addition, it has been found to act as both a nucleoside mono- and diphosphate kinase suggesting it may have a role in RNA and DNA biosynthesis Catalytic activity: ATP + AMP = ADP + ADP	<i>adk</i>	1	53	6	<i>M. leprae</i>	7
4	Short-chain dehydrogenase/reductase SDR	Involved in the fatty acid biosynthesis pathway (first reduction step) (mycolic acid biosynthesis)	<i>fabG</i>	1	47	3	<i>Mycobacterium</i> sp.	1
5	Diguanylate cyclase	Catalytic activity: 2 GTP ↔ 2 diphosphate + cyclic di-GMP	<i>PatI 0480</i>	1	52	2	<i>Pseudoalteromonas atlantica</i> T6c	2
6	Conserved hypothetical protein WAG 31	Unknown	<i>wag31</i>	3	112	12	<i>M. tuberculosis</i> H37Rv, <i>M. avium</i> subsp. <i>paratuberculosis</i> K-10	10
7	Conserved hypothetical protein	Unknown	<i>Rv3075c</i>	2	65	4	<i>M. tuberculosis</i> H37Rv	10
8	Probable aldehyde dehydrogenase	Interconversion aldehyde and acid. Catalytic activity: an aldehyde + NAD ⁺ + H ₂ O = an acid + NADH Catalysing the reversible conversion of 2-phosphoglycerate into phosphoenolpyruvate.	<i>Rv0458</i>	2	41	4	<i>M. tuberculosis</i> , <i>M. bovis</i> , <i>M. leprae</i>	7
9	Enolase	It is essential for the degradation of carbohydrates via glycolysis Catalytic activity: 2-phospho-D-glycerate = phosphoenolpyruvate + H ₂ O	<i>eno</i>	4	77	10	<i>M. bovis</i> AF2122/97	7

TABLE 4: Continued.

Protein	Name	Function	Gene name	Peptides ID	Global score ^a	Sequence coverage %	Reference sequence	FC ^b
10	DNA polymerase III (beta chain) DNAN	DNA polymerase III is a complex, multichain enzyme responsible for most of the replicative synthesis in bacteria. This DNA polymerase also exhibits 3' to 5' exonuclease activity. The beta chain is required for initiation of replication once it is clamped onto DNA; it slides freely (bidirectional and ATP-independent) along duplex DNA Catalytic activity: N-deoxynucleoside triphosphate = N-diphosphate + (DNA)n	<i>dnaN</i>		44	11	<i>M. tuberculosis</i>	2

^a According to Mascot search results, protein scores >25 are significant ($P < 0.05$).

^b FC: functional category. 0: virulence, detoxification, and adaptation; 1: lipid metabolism; 2: information pathways; 3: cell wall and cell processes; 4: stable RNAs; 5: insertion sequences and phages; 6: Pe/PPE; 7: intermediary metabolism and respiration; 8: unknown; 9: regulatory protein; 10: conserved hypothetical (from BCGList World-Wide Web Server <http://genolist.pasteur.fr/BCGList>).

that the lectins can play a major role in the interaction with human cells [33, 34]. These proteins could be utilised to discriminate between NTM and *Mycobacterium tuberculosis* complex infections. However, the presence of these proteins in other NTM species that were not included in this study must be determined by specific assays.

4. Conclusions

NTM are a group of environmental bacteria that are considered to be potentially pathogenic both to immunocompetent and immunocompromised individuals. Exposure to these bacteria is a factor involved in the variability of the protective efficacy of the BCG vaccine because of cross-reactive antigens that are common between NTM and strains of the *M. tuberculosis* complex. Additionally, exposure to NTM is responsible for the low predictive value of the PPD test due to cross-reactivity with similar antigens.

In this study, we described the protein profiles of five NTM strains. Analysis of these profiles indicated the presence of proteins that were both common to and specific to each NTM strain. The common proteins can be utilised as markers of prior exposure to NTM. They can potentially provide a more specific diagnosis with a decreased number of false positives. Also, the proteins that were identified in the proteome of the NTM strains studied can be useful in the development of new diagnostic tools and may help explain the cross-reactivity between the PPD test and the BCG vaccination as described above.

Conflict of Interests

The authors declare that there is no conflict of interests regarding the publication of this paper.

Acknowledgment

This work was supported by Consejo Nacional de Ciencia y Tecnología (CONACYT), México, Grant SALUD-2007-C01-68729, CONACYT SALUD-2010-C01-140998 and DGAPA-IN214713.

References

- [1] J. O. Falkinham III, "Surrounded by mycobacteria: nontuberculous mycobacteria in the human environment," *Journal of Applied Microbiology*, vol. 107, no. 2, pp. 356–367, 2009.
- [2] A. I. Castillo-Rodal, M. Mazari-Hiriart, L. T. Lloret-Sánchez, B. Sachman-Ruiz, P. Vinuesa, and Y. López-Vidal, "Potentially pathogenic nontuberculous mycobacteria found in aquatic systems. Analysis from a reclaimed water and water distribution system in Mexico City," *European Journal of Clinical Microbiology and Infectious Diseases*, vol. 31, no. 5, pp. 683–694, 2012.
- [3] R. M. Thomson, "Changing epidemiology of pulmonary nontuberculous mycobacteria infections," *Emerging Infectious Diseases*, vol. 16, no. 10, pp. 1576–1583, 2010.
- [4] P. M. Cassidy, K. Hedberg, A. Saulson, E. McNelly, and K. L. Winthrop, "Nontuberculous mycobacterial disease prevalence and risk factors: a changing epidemiology," *Clinical Infectious Diseases*, vol. 49, no. 12, pp. e124–e129, 2009.
- [5] B. M. Knoll, "Update on nontuberculous mycobacterial infections in solid organ and hematopoietic stem cell transplant recipients," *Current Infectious Disease Reports*, vol. 16, no. 9, article 421, 2014.
- [6] E. E. Bodle, J. A. Cunningham, P. Della-Latta, N. W. Schluger, and L. Saiman, "Epidemiology of nontuberculous mycobacteria in patients without HIV infection, New York City," *Emerging Infectious Diseases*, vol. 14, no. 3, pp. 390–396, 2008.
- [7] I. M. Orme and D. J. Ordway, "Host response to nontuberculous mycobacterial infections of current clinical importance," *Infection and Immunity*, vol. 82, no. 9, pp. 3516–3522, 2014.
- [8] J. Esteban, N. Z. Martín-de-Hijas, A.-I. Fernandez, R. Fernandez-Roblas, and I. Gadea, "Epidemiology of infections due to nonpigmented rapidly growing mycobacteria diagnosed in an urban area," *European Journal of Clinical Microbiology & Infectious Diseases*, vol. 27, no. 10, pp. 951–957, 2008.
- [9] M. J. M. Vaerewijck, G. Huys, J. C. Palomino, J. Swings, and F. Portaels, "Mycobacteria in drinking water distribution systems: ecology and significance for human health," *FEMS Microbiology Reviews*, vol. 29, no. 5, pp. 911–934, 2005.
- [10] B. G. Shelton, W. D. Flanders, and G. K. Morris, "*Mycobacterium* sp. as a possible cause of hypersensitivity pneumonitis in machine workers," *Emerging Infectious Diseases*, vol. 5, no. 2, pp. 270–273, 1999.
- [11] WHO, "BCG vaccine," *Weekly Epidemiological Record* 4, 2004.
- [12] P. Andersen and T. M. Doherty, "The success and failure of BCG—implications for a novel tuberculosis vaccine," *Nature Reviews Microbiology*, vol. 3, no. 8, pp. 656–662, 2005.
- [13] G. F. Black, H. M. Dockrell, A. C. Crampin et al., "Patterns and implications of naturally acquired immune responses to environmental and tuberculous mycobacterial antigens in Northern Malawi," *Journal of Infectious Diseases*, vol. 184, no. 3, pp. 322–329, 2001.
- [14] C. Demangel, T. Garnier, I. Rosenkrands, and S. T. Cole, "Differential effects of prior exposure to environmental mycobacteria on vaccination with *Mycobacterium bovis* BCG or a recombinant BCG strain expressing RD1 antigens," *Infection and Immunity*, vol. 73, no. 4, pp. 2190–2196, 2005.
- [15] L. Brandt, J. F. Cunha, A. W. Olsen et al., "Failure of the *Mycobacterium bovis* BCG vaccine: some species of environmental mycobacteria block multiplication of BCG and induction of protective immunity to tuberculosis," *Infection and Immunity*, vol. 70, no. 2, pp. 672–678, 2002.
- [16] E. Mendoza-Coronel, R. Camacho-Sandoval, L. C. Bonifaz, and Y. López-Vidal, "PD-L2 induction on dendritic cells exposed to *Mycobacterium avium* downregulates BCG-specific T cell response," *Tuberculosis*, vol. 91, no. 1, pp. 36–46, 2011.
- [17] L. Kröger, M. Korppi, J. Pelkonen, M. Pietikäinen, and M. L. Katila, "Development of tuberculin reactivity and sensitization to *M. scrofulaceum* and *M. fortuitum* in children BCG-vaccinated at birth," *European Respiratory Journal*, vol. 15, no. 2, pp. 382–387, 2000.
- [18] B. L. Marmorstein and D. J. Scheinhorn, "The role of nontuberculous mycobacterial skin test antigens in the diagnosis of mycobacterial infections," *Chest*, vol. 67, no. 3, pp. 320–324, 1975.
- [19] R. E. Huebner, M. F. Schein, G. M. Cauthen et al., "Evaluation of the clinical usefulness of mycobacterial skin test antigens in adults with pulmonary mycobacterioses," *The American Review of Respiratory Disease*, vol. 145, no. 5, pp. 1160–1166, 1992.
- [20] M. Pai, "Alternatives to the tuberculin skin test: Interferon- γ assays in the diagnosis of *Mycobacterium tuberculosis* infection,"

- Indian Journal of Medical Microbiology*, vol. 23, no. 3, pp. 151–158, 2005.
- [21] M. Rodríguez-Alvarez, G. Mendoza-Hernández, S. Encarnación, J. J. Calva, and Y. López-Vidal, “Phenotypic differences between BCG vaccines at the proteome level,” *Tuberculosis*, vol. 89, no. 2, pp. 126–135, 2009.
- [22] M. Rodríguez-Alvarez, I. D. Palomec-Nava, G. Mendoza-Hernández, and Y. López-Vidal, “The secretome of a recombinant BCG substrain reveals differences in hypothetical proteins,” *Vaccine*, vol. 28, no. 23, pp. 3997–4001, 2010.
- [23] I. Rosenkrands, K. Weldingh, S. Jacobsen et al., “Mapping and identification of *Mycobacterium tuberculosis* proteins by two-dimensional gel electrophoresis, microsequencing and immunodetection,” *Electrophoresis*, vol. 21, no. 5, pp. 935–948, 2000.
- [24] Y. Y. Bahk, S. A. Kim, J. S. Kim et al., “Antigens secreted from *Mycobacterium tuberculosis*: identification by proteomics approach and test for diagnostic marker,” *Proteomics*, vol. 4, no. 11, pp. 3299–3307, 2004.
- [25] Proteome 2D-PAGE Database, <http://web.mpiib-berlin.mpg.de/cgi-bin/pdbs/2d-page/extern/index.cgi>.
- [26] S. Borsuk, J. Newcombe, T. A. Mendum, O. A. Dellagostin, and J. McFadden, “Identification of proteins from tuberculin purified protein derivative (PPD) by LC-MS/MS,” *Tuberculosis*, vol. 89, no. 6, pp. 423–430, 2009.
- [27] P. Orduña, M. A. Cevallos, S. P. De León et al., “Genomic and proteomic analyses of *Mycobacterium bovis* BCG Mexico 1931 reveal a diverse immunogenic repertoire against tuberculosis infection,” *BMC Genomics*, vol. 12, article 493, 2011.
- [28] H. Kitaura, M. Kinomoto, and T. Yamada, “Ribosomal protein L7 included in tuberculin purified protein derivative (PPD) is a major heat-resistant protein inducing strong delayed-type hypersensitivity,” *Scandinavian Journal of Immunology*, vol. 50, no. 6, pp. 580–587, 1999.
- [29] K. Kim, H. Sohn, J.-S. Kim et al., “*Mycobacterium tuberculosis* Rv0652 stimulates production of tumour necrosis factor and monocytes chemoattractant protein-1 in macrophages through the Toll-like receptor 4 pathway,” *Immunology*, vol. 136, no. 2, pp. 231–240, 2012.
- [30] W.-X. Xu, L. Zhang, J.-T. Mai et al., “The Wag31 protein interacts with AccA3 and coordinates cell wall lipid permeability and lipophilic drug resistance in *Mycobacterium smegmatis*,” *Biochemical and Biophysical Research Communications*, vol. 448, no. 3, pp. 255–260, 2014.
- [31] M. K. Gupta, V. Subramanian, and J. S. Yadav, “Immuno-proteomic identification of secretory and subcellular protein antigens and functional evaluation of the secretome fraction of *Mycobacterium immunogenum* a newly recognized species of the *Mycobacterium chelonae*—*Mycobacterium abscessus* group,” *Journal of Proteome Research*, vol. 8, no. 5, pp. 2319–2330, 2009.
- [32] Y. Dong, S. Demaria, X. Sun et al., “HLA-A2-restricted CD8⁺-cytotoxic-T-cell responses to novel epitopes in *Mycobacterium tuberculosis* superoxide dismutase, alanine dehydrogenase, and glutamine synthetase,” *Infection and Immunity*, vol. 72, no. 4, pp. 2412–2415, 2004.
- [33] L. M. van den Berg, S. I. Gringhuis, and T. B. H. Geijtenbeek, “An evolutionary perspective on C-type lectins in infection and immunity,” *Annals of the New York Academy of Sciences*, vol. 1253, no. 1, pp. 149–158, 2012.
- [34] K. K. Huynh, S. A. Joshi, and E. J. Brown, “A delicate dance: host response to mycobacteria,” *Current Opinion in Immunology*, vol. 23, no. 4, pp. 464–472, 2011.



Hindawi
Submit your manuscripts at
<http://www.hindawi.com>

